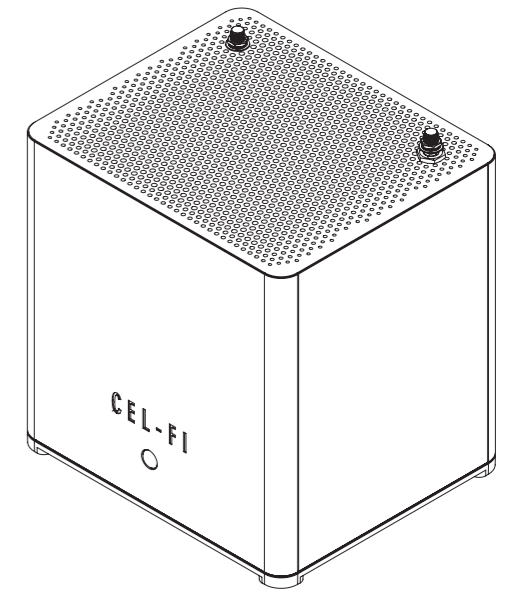




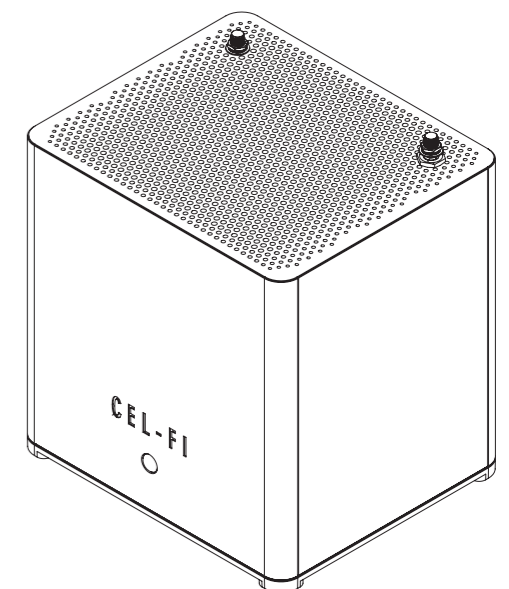
Cel-Fi™ SOLO Quick Start Guide



- Box Contents:
- Quick Start Guide
 - Cel-Fi SOLO Unit
 - Mounting Bracket
 - AC Adapter

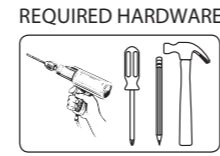
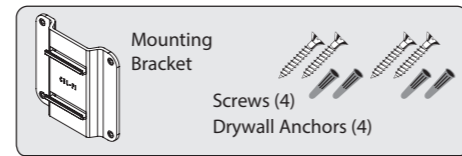


Cel-Fi™ SOLO Quick Start Guide



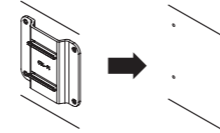
- Box Contents:
- Quick Start Guide
 - Cel-Fi SOLO Unit
 - Mounting Bracket
 - AC Adapter

Mounting Instructions

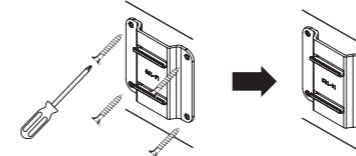


NOTE: This package comes equipped with screws and drywall anchors for mounting in standard drywall. Before you install the mounts, make sure there are no wires or other objects, or metal plates, behind the drywall that may interfere with the inserts, screws, mount, or mounted units.

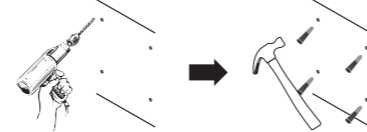
1 Determine Cel-Fi SOLO location. (Refer to Installation section). Determine mounting hole locations.



3 Install mounting brackets.

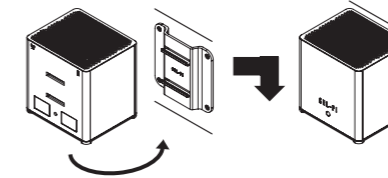


2 In each marked spot, use a 3/16" drill bit to drill guide holes for the anchors. Install anchors (Drywall).



4 Attach the Cel-Fi SOLO to the wall mounted bracket.

NOTE: Make sure the Cel-Fi SOLO clicks securely into the mount for best results.



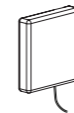
Additional Antenna Options

Review the latest authorized antennas at: www.cel-fi.com/antennas

RFI Indoor Server Donor Antenna DAS6960-SOC153-N



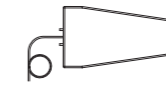
RFI Wideband Panel Antenna DAS6960-SOC153-N



RFI LPDA Antenna LPDA7030 -11-0.5NF

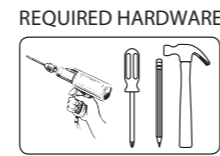
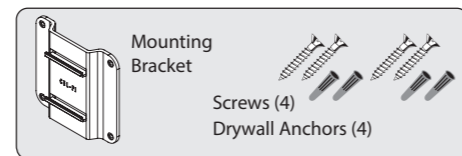


RFI Wideband Directional Antenna LPDA7040 -11-0.3NF



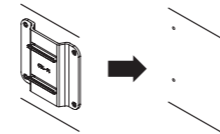
420N007+441-001-21RB

Mounting Instructions

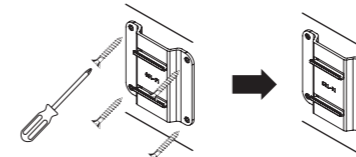


NOTE: This package comes equipped with screws and drywall anchors for mounting in standard drywall. Before you install the mounts, make sure there are no wires or other objects, or metal plates, behind the drywall that may interfere with the inserts, screws, mount, or mounted units.

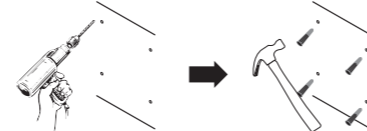
1 Determine Cel-Fi SOLO location. (Refer to Installation section). Determine mounting hole locations.



3 Install mounting brackets.

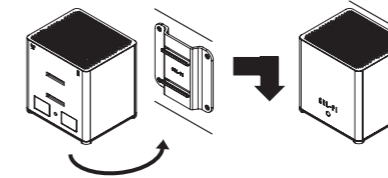


2 In each marked spot, use a 3/16" drill bit to drill guide holes for the anchors. Install anchors (Drywall).



4 Attach the Cel-Fi SOLO to the wall mounted bracket.

NOTE: Make sure the Cel-Fi SOLO clicks securely into the mount for best results.



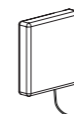
Additional Antenna Options

Review the latest authorized antennas at: www.cel-fi.com/antennas

RFI Indoor Server Donor Antenna DAS6960-SOC153-N



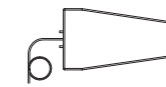
RFI Wideband Panel Antenna DAS6960-SOC153-N



RFI LPDA Antenna LPDA7030 -11-0.5NF



RFI Wideband Directional Antenna LPDA7040 -11-0.3NF



420N007+441-001-21RB

Specifications			
Band 1		Airlink	
Downlink (DL) Frequency (MHz)	2110 - 2170	Supported Carriers - LTE	5, 10, 15, 20 MHz
Uplink (UL) Frequency	1920 - 1980	Supported Carriers - HSPA /W-CDMA	3.84 MHz
Per channel signal bandwidth (MHz)	20		1-4 carriers
Technology	HSPA & LTE	Power	
Dual-carrier	Yes	Downlink Power - All Bands	20dBm
Band 3		Uplink Power - Bands 1, 3	22dBm
Downlink (DL) Frequency (MHz)	1805 - 1880	Uplink Power - Bands 5, 8, 28L	20dBm
Uplink (UL) Frequency	1710 - 1785	Environmental	
Per channel signal bandwidth (MHz)	20	Operating Temperature	0 - 40 °C
Technology	HSPA & LTE	Relative Humidity	0 - 95
Dual-carrier	No	Non-condensing	
Band 5		RoHS (EU and China)	Yes
Downlink (DL) Frequency (MHz)	869 - 894	CE	Yes
Uplink (UL) Frequency	824 - 849	IP Rating	20
Per channel signal bandwidth (MHz)	15	Mechanical	
Technology	HSPA & LTE	LxWxH (mm)	80 x 158 x 163
Dual-carrier	No	Weight (boxed, with 8m cable)	2,580g
Band 8		Cooling	Convection
Downlink (DL) Frequency (MHz)	925 - 960	IP Rating	20
Uplink (UL) Frequency	880 - 915	Antenna Ports	
Per channel signal bandwidth (MHz)	15	Frequency	698MHz -
Technology	HSPA & LTE	2700MHz	
Dual-carrier	No	Impedance	50 Ohms
Band 28L			
Downlink (DL) Frequency (MHz)	758 - 788		
Uplink (UL) Frequency	703 - 733		
Per channel signal bandwidth (MHz)	20		
Technology	LTE		
Dual-carrier	No		

qsg-solo_1-3-5-8-28L_aus_20-0602

Specifications			
Band 1		Airlink	
Downlink (DL) Frequency (MHz)	2110 - 2170	Supported Carriers - LTE	5, 10, 15, 20 MHz
Uplink (UL) Frequency	1920 - 1980	Supported Carriers - HSPA /W-CDMA	3.84 MHz
Per channel signal bandwidth (MHz)	20		1-4 carriers
Technology	HSPA & LTE	Power	
Dual-carrier	Yes	Downlink Power - All Bands	20dBm
Band 3		Uplink Power - Bands 1, 3	22dBm
Downlink (DL) Frequency (MHz)	1805 - 1880	Uplink Power - Bands 5, 8, 28L	20dBm
Uplink (UL) Frequency	1710 - 1785	Environmental	
Per channel signal bandwidth (MHz)	20	Operating Temperature	0 - 40 °C
Technology	HSPA & LTE	Relative Humidity	0 - 95
Dual-carrier	No	Non-condensing	
Band 5		RoHS (EU and China)	Yes
Downlink (DL) Frequency (MHz)	869 - 894	CE	Yes
Uplink (UL) Frequency	824 - 849	IP Rating	20
Per channel signal bandwidth (MHz)	15	Mechanical	
Technology	HSPA & LTE	LxWxH (mm)	80 x 158 x 163
Dual-carrier	No	Weight (boxed, with 8m cable)	2,580g
Band 8		Cooling	Convection
Downlink (DL) Frequency (MHz)	925 - 960	IP Rating	20
Uplink (UL) Frequency	880 - 915	Antenna Ports	
Per channel signal bandwidth (MHz)	15	Frequency	698MHz -
Technology	HSPA & LTE	2700MHz	
Dual-carrier	No	Impedance	50 Ohms
Band 28L			
Downlink (DL) Frequency (MHz)	758 - 788		
Uplink (UL) Frequency	703 - 733		
Per channel signal bandwidth (MHz)	20		
Technology	LTE		
Dual-carrier	No		

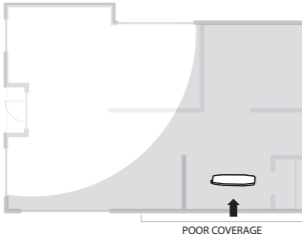
qsg-solo_1-3-5-8-28L_aus_20-0602

Quick Installation

IMPORTANT: Your Cel-Fi SOLO is electronic equipment. The Cel-Fi SOLO must be kept indoors and in a dry, cool, well ventilated area.

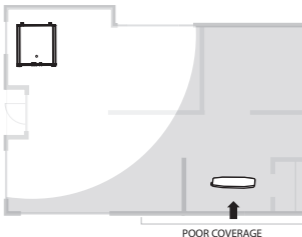
1 Define Coverage Problem

Determine where coverage is needed. This is where the server patch antenna should be placed.



2 Place Main Unit

Place the main unit close to a window where there is coverage and as far away from the server patch antenna as the cable will allow.



Ideally it should be placed with at least one wall between the donor and server antennas. If the patch antenna cable is too short, it may be extended.

Included In the Box
Other variations of the product package may include additional internal and external antennas or components.

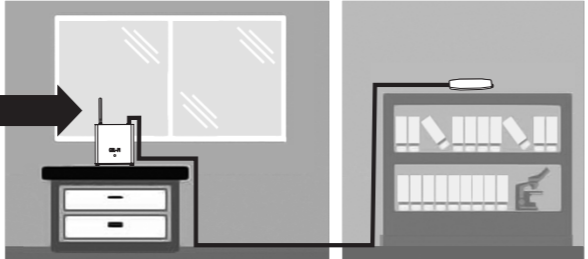
Main Unit

Mounting Bracket

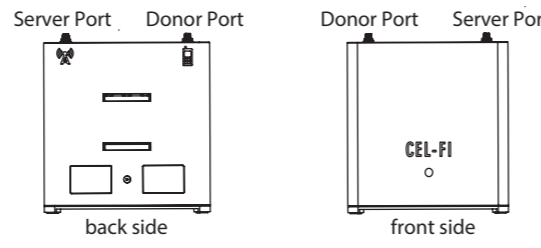
AC Adapter



3 Attach Server and Donor Antennas



Attach the antennas to the two ports of the Cel-Fi unit and place one in the window and the other in the area where coverage is required.



Keep donor and server antenna separated/isolated from each other for best performance.

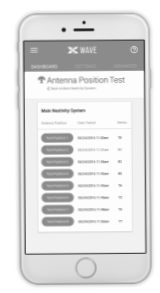
4 Plug In Cel-Fi SOLO



Plug-in the unit to power. The LED on the front will blink during setup.

5 Cel-Fi WAVE App

The Cel-Fi WAVE app can be used to optimize the Cel-Fi SOLO's performance. The antenna locations can be adjusted or relocated and system performance quickly assessed via the Cel-Fi WAVE app.

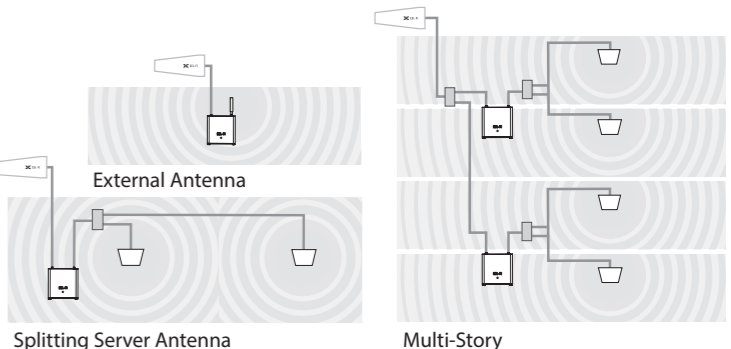


Advanced Install

For best results, separate the donor and server antenna(s) as much as possible. Antenna separation (isolation) can be achieved with either physical distance or by having materials (like a wall) between the antennas.

Make sure any cables, splitters, and antennas used in the system are properly matched. (Cel-Fi SOLO is rated for 50Ω)

- Recommend**
- > 30dB port-to-port for any splitter
 - External directional antenna #A62-V44-100 will provide best overall system performance
 - Wideband panel antenna #A52-V32-100 may be used as an effective indoor donor antenna
- Downlink power should be:**
- > 0dBm to use a two-way splitter
 - > 3dBm to use a four-way splitter



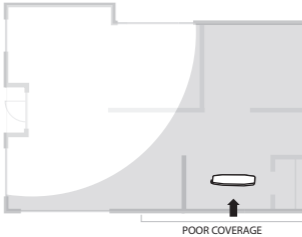
Cel-Fi Safe Copyright © 2020 by Nextivity, Inc. U.S. Patents pending. All rights reserved. The Nextivity and Cel-Fi logos are registered trademarks of Nextivity Inc. All other trademarks or registered trademarks listed belong to their respective owners. Designed by Nextivity Inc in

Quick Installation

IMPORTANT: Your Cel-Fi SOLO is electronic equipment. The Cel-Fi SOLO must be kept indoors and in a dry, cool, well ventilated area.

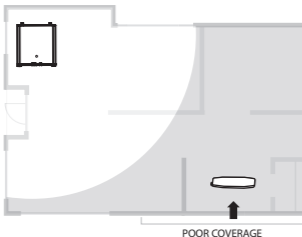
1 Define Coverage Problem

Determine where coverage is needed. This is where the server patch antenna should be placed.



2 Place Main Unit

Place the main unit close to a window where there is coverage and as far away from the server patch antenna as the cable will allow.



Ideally it should be placed with at least one wall between the donor and server antennas. If the patch antenna cable is too short, it may be extended.

Included In the Box
Other variations of the product package may include additional internal and external antennas or components.

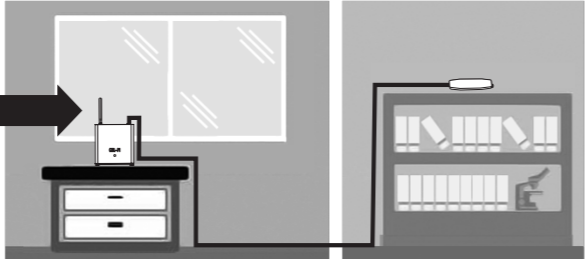
Main Unit

Mounting Bracket

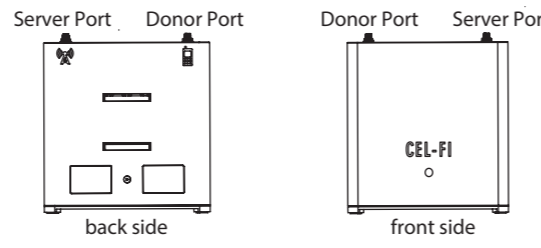
AC Adapter



3 Attach Server and Donor Antennas



Attach the antennas to the two ports of the Cel-Fi unit and place one in the window and the other in the area where coverage is required.



Keep donor and server antenna separated/isolated from each other for best performance.

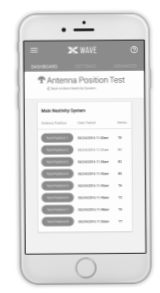
4 Plug In Cel-Fi SOLO



Plug-in the unit to power. The LED on the front will blink during setup.

5 Cel-Fi WAVE App

The Cel-Fi WAVE app can be used to optimize the Cel-Fi SOLO's performance. The antenna locations can be adjusted or relocated and system performance quickly assessed via the Cel-Fi WAVE app.

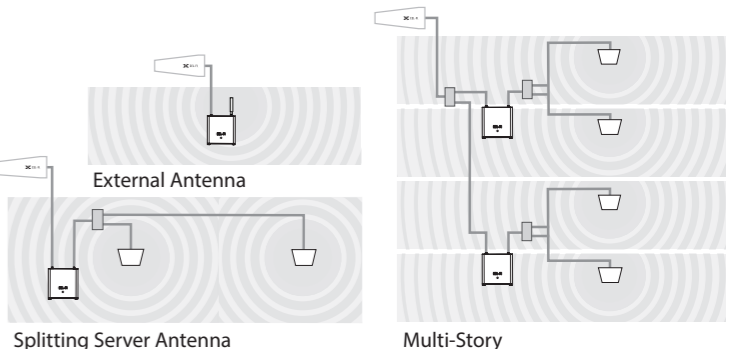


Advanced Install

For best results, separate the donor and server antenna(s) as much as possible. Antenna separation (isolation) can be achieved with either physical distance or by having materials (like a wall) between the antennas.

Make sure any cables, splitters, and antennas used in the system are properly matched. (Cel-Fi SOLO is rated for 50Ω)

- Recommend**
- > 30dB port-to-port for any splitter
 - External directional antenna #A62-V44-100 will provide best overall system performance
 - Wideband panel antenna #A52-V32-100 may be used as an effective indoor donor antenna
- Downlink power should be:**
- > 0dBm to use a two-way splitter
 - > 3dBm to use a four-way splitter



Cel-Fi Safe Copyright © 2020 by Nextivity, Inc. U.S. Patents pending. All rights reserved. The Nextivity and Cel-Fi logos are registered trademarks of Nextivity Inc. All other trademarks or registered trademarks listed belong to their respective owners. Designed by Nextivity Inc in